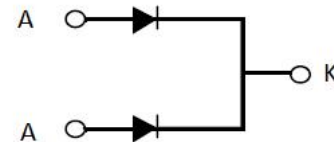
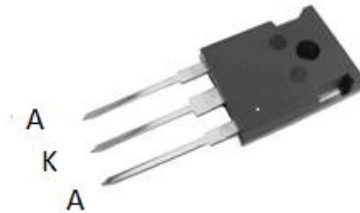


## SCHOTTKY RECTIFIERS

### Features:

- High ESD capacity
- High reliability
- High frequency operation
- Low forward voltage
- High surge capacity



### Applications:

- Switching mode power supply
- High frequency inverter circuit
- Polarity protection circuit

Product Summary	
$V_R$	45 V
$I_{F(AV)}$	2*30A
$T_j$	125 °C
$V_F(max.)$	0.65V

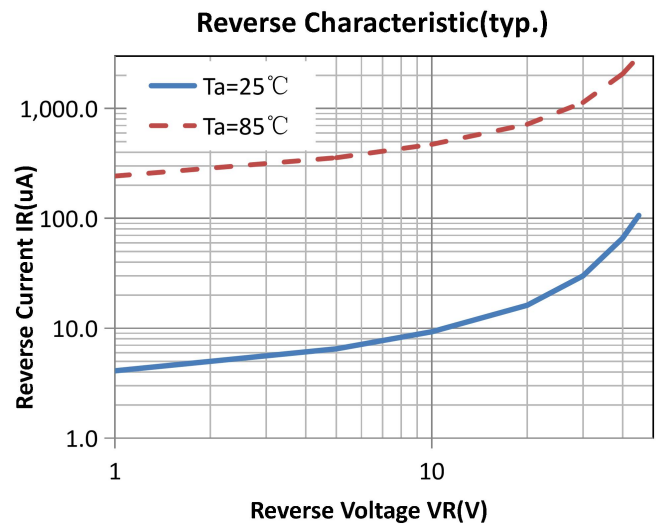
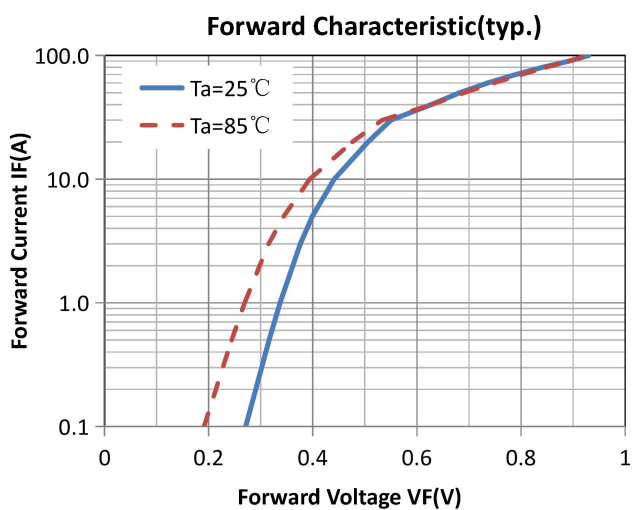
Absolute Maximum Ratings			
Parameter	Symbol	Values	Units
Repetitive peak reverse voltage	$V_{RRM}$	45	V
Continuous forward current	$I_{F(AV)}$	60	A
Single pulse forward current	$I_{FSM}$	500	
Operating junction	$T_j$	125	°C
Storage temperatures	$T_{stg}$	-55 to +125	°C
Peak Repetitive Reverse Surge Current	$I_{RRM}$	5	A

Electrical characteristics (Ta=25°C unless otherwise specified)						
Parameter	Symbol	Test Conditions	Min	Typ.	Max.	Units
Breakdown voltage Blocking voltage	$V_{BR}$ , $V_R$	$I_R=100\mu A$	45			V
Forward voltage (Per Diode)	$V_F$	$I_F=30 A$		0.56	0.65	
		$I_F=30 A, T_j=85^\circ C$		0.54	0.60	
Reverse leakage current(Per Diode)	$I_R$	$V_R=V_{RRM}$			150	$\mu A$
		$T_j=85^\circ C, V_R=45V$			30	mA

### Thermal characteristics

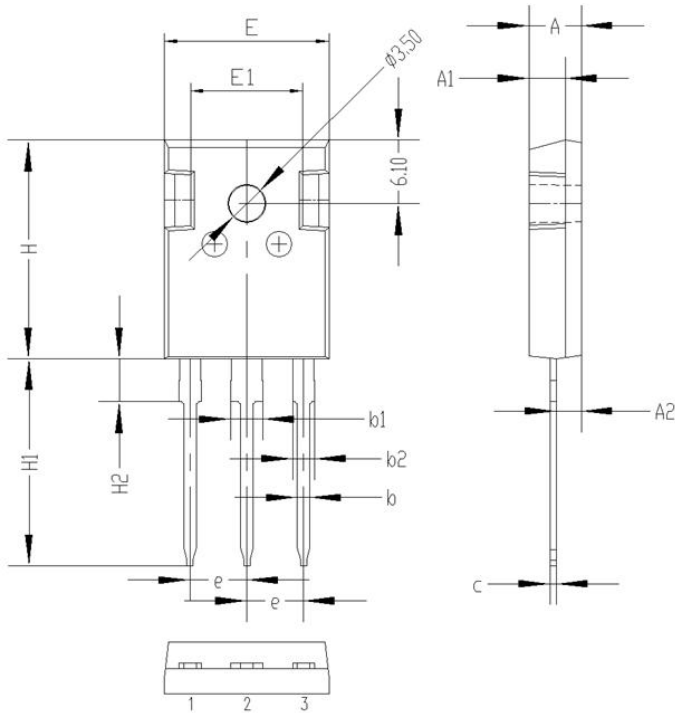
Parameter	Symbol	Typ.	Units
Junction-to-Case	$R_{\theta JC}$	0.8	$^\circ C/W$

### Electrical performance (typic)



## Package Information

### TO-247 PACKAGE



Symbol	Dimensions(millimeters)	
	Min.	Max.
A	4.80	5.20
A1	3.30	3.70
A2	2.10	2.50
b	1.00	1.40
b1	2.90	3.30
b2	1.90	2.30
c	0.40	0.80
e	5.25	5.65
E	15.6	16.0
E1	10.6	11.00
H	20.8	21.2
H1	19.4	20.4
H2	3.90	4.30
G	5.90	6.30
$\Phi P$	3.30	3.70