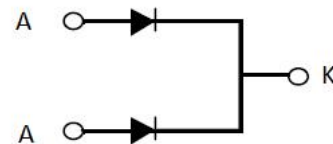
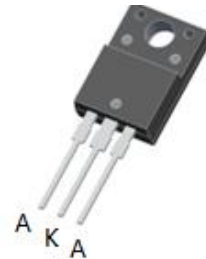


SCHOTTKY RECTIFIERS

Features:

- High ESD capacity
- High junction temperature capability
- High frequency operation
- Low leakage current
- High surge capacity



Applications:

- Switching mode power supply
- High frequency inverter circuit
- Polarity protection circuit

Product Summary	
V_R	150 V
$I_{F(AV)}$	2*10A
T_j	150°C
$V_F(max.)$	1.1 V

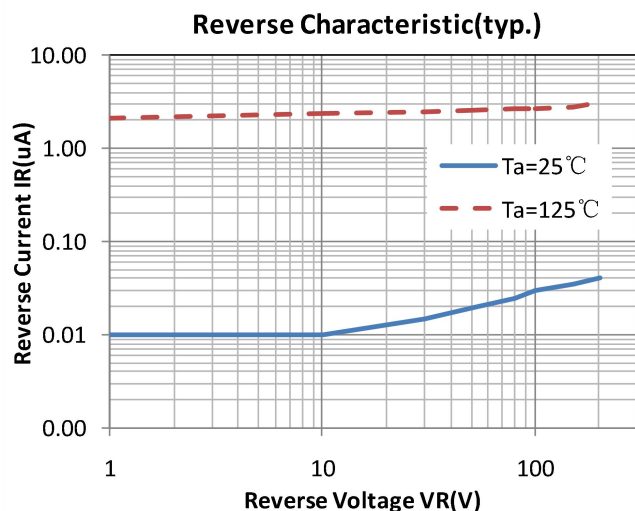
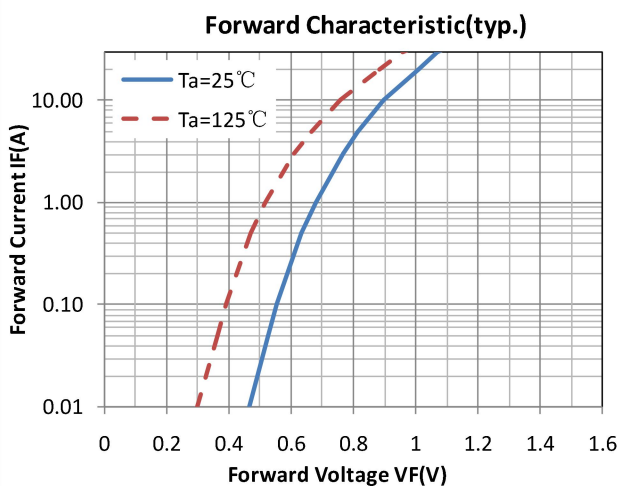
Absolute Maximum Ratings			
Parameter	Symbol	Values	Units
Repetitive peak reverse voltage	V_{RRM}	150	V
Continuous forward current	$I_{F(AV)}$	20	A
Single pulse forward current	I_{FSM}	100	
Operating junction	T_j	150	°C
Storage temperatures	T_{stg}	-55 to +150	°C
Peak Repetitive Reverse Surge Current	I_{RRM}	6	A

Electrical characteristics (Ta=25°C unless otherwise specified)						
Parameter	Symbol	Test Conditions	Min	Typ.	Max.	Units
Breakdown voltage Blocking voltage	V_{BR} , V_R	$I_R=100\mu A$	150			V
Forward voltage (Per Diode)	V_F	$I_F=10A$		0.82	1.1	
		$I_F=10 A, T_j=85^\circ C$		0.75	1.0	
Reverse leakage current(Per Diode)	I_R	$V_R=V_{RRM}$			20	μA
		$T_j=125^\circ C, V_R=150V$			10	mA

Thermal characteristics

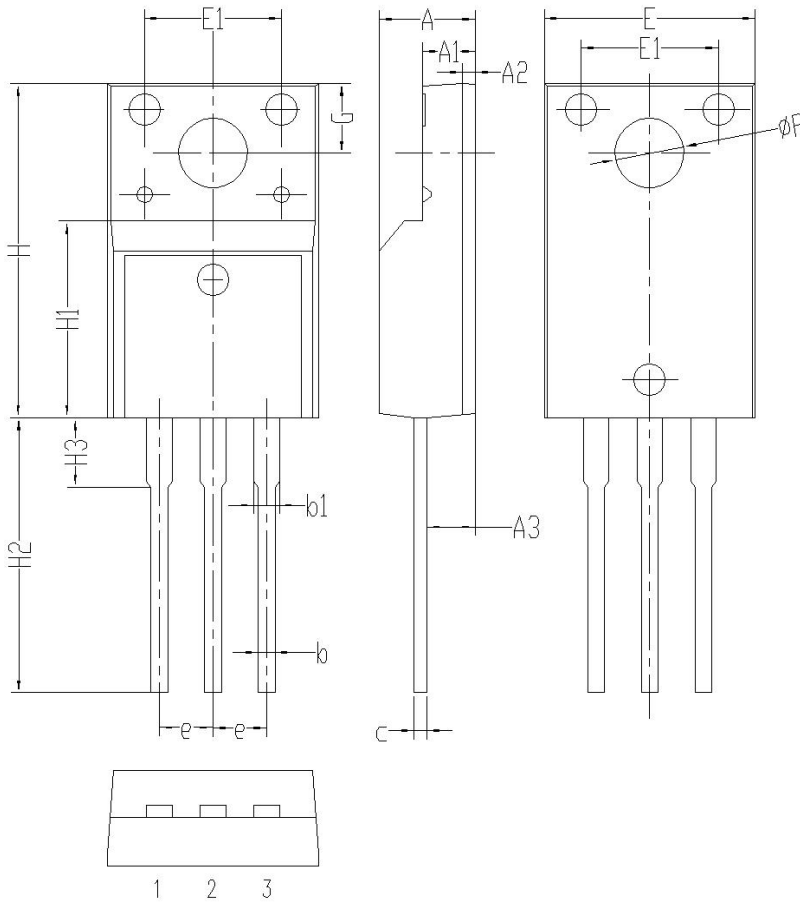
Parameter	Symbol	Typ.	Units
Junction-to-Case	$R_{\theta JC}$	3.0	$^\circ C/W$

Electrical performance (typic)



Package Information

TO-220F PACKAGE



	mm		
	MIN	NOM	MAX
A	4.35	4.55	4.75
A 1	2.3	2.5	2.7
A 2	0.4	0.6	0.8
A 3	2.1	2.3	2.5
b	0.6	0.8	1.0
b 1	1.0	1.2	1.4
c	0.3	0.5	0.7
e	2.3	2.5	2.7
E	9.8	10	10.2
E 1	6.3	6.5	6.7
H	15.6	15.8	16.0
H 1	8.8	9	9.2
H 2	12.9	13.2	13.5
H 3	3.1	3.3	3.5
G	3.1	3.3	3.5
ϕP	3.1	3.3	3.5